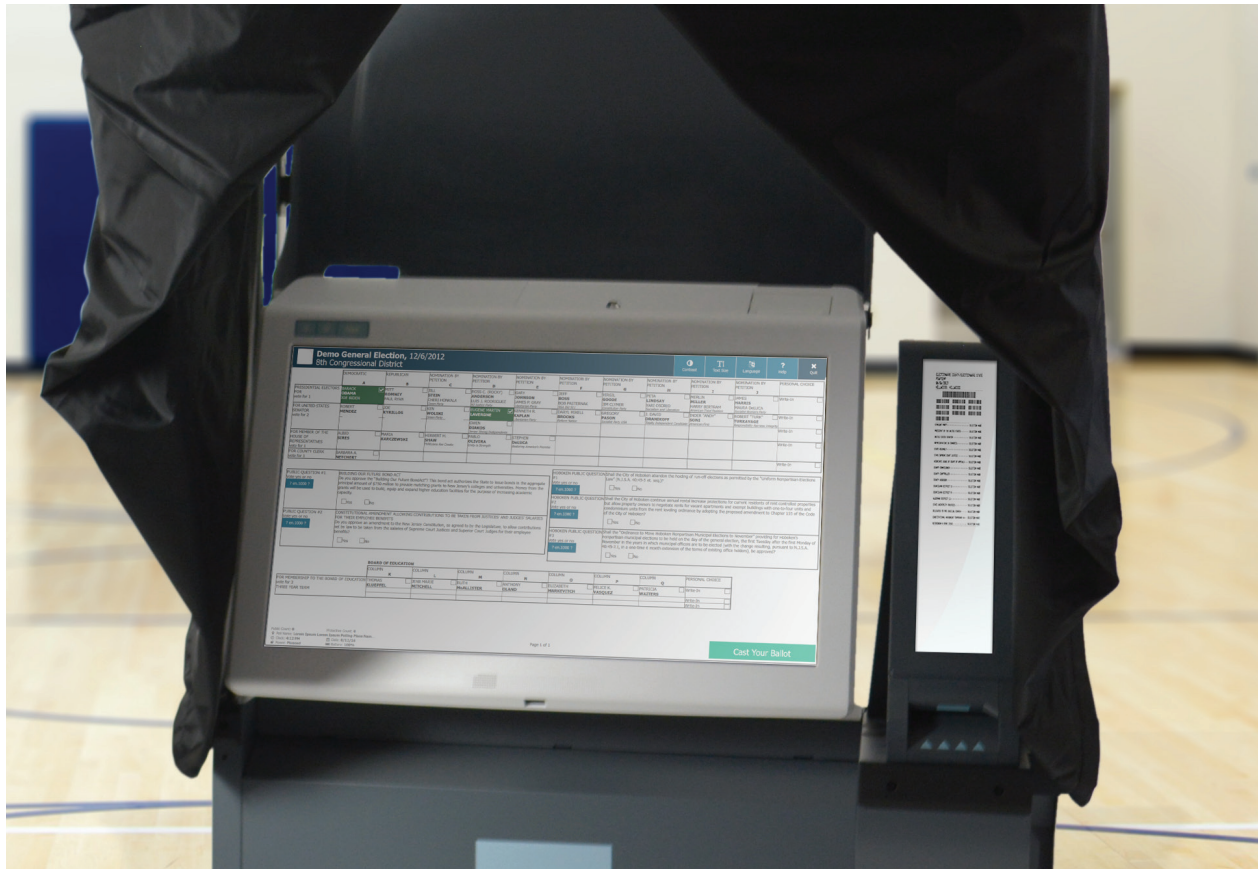


ExpressVote® XL



PRODUCT INFORMATION

The ExpressVote XL full-face universal voting system displays the full ballot on a 32-inch interactive screen and produces an independent voter-verifiable paper record. The ExpressVote XL improves the Election Day experience for voters—allowing them to mark and tabulate their vote in one stop.



Digital media assets, including pictures, videos, security documents and our marketing one-sheets are available for download at:
essvote.com/press-kit-expressvote-xl

KEY FEATURES & BENEFITS



EASE OF USE AND SETUP

The ExpressVote XL's intuitive design offers easy-to-follow instructions for election officials, poll workers and voters. There is no complicated technology to manage or program. The ExpressVote XL is easy for poll workers to set up and close down.



INTERACTIVE SCREEN

The ExpressVote XL has a full-face 32-inch interactive screen that can display an entire election. Every race appears on the same screen—there is no need for the voter to move from screen to screen. Voters touch a screen to mark their selections. The ExpressVote XL guides voters through the ballot selection process with screen prompts and notifies voters of overvotes and undervote with on-screen prompts and feedback.



VERIFIABLE PAPER RECORD

The ExpressVote XL's integrated thermal printer marks a voter's selections on a voter-verifiable paper record that is viewable through a secure window to the right of the touch screen. The paper record enables a voter to confirm the accuracy of his or her votes. If the voter wants to change his or her vote, they can do so at that time. After a voter verifies all contest choices, the system tabulates the selections and deposits the paper record in the secure card container.



INNOVATIVE DESIGN FOR ACCESSIBILITY

As a fully compliant Americans with Disabilities Act (ADA) voting solution, the ExpressVote XL accommodates the full range of human diversity, including physical, perceptual and cognitive abilities. The unit's screen is adjustable for both standing and seated voters. The unit easily accommodates ADA voting solutions such as headphones, sip-and-puff device, two-position rocker switch and audio-tactile keypad. The ExpressVote XL enables each voter to mark or cast his or her ballot independently.



MULTILINGUAL CAPABILITY

Ensures that all citizens in a diverse population can exercise their privilege to vote in their native language. Multiple languages can be stored on a single unit for use with both audio and visual voting sessions. Allowing voters to choose their selections using their language of choice maintains confidence and enhances the voting experience.

ExpressVote® XL

Security Facts



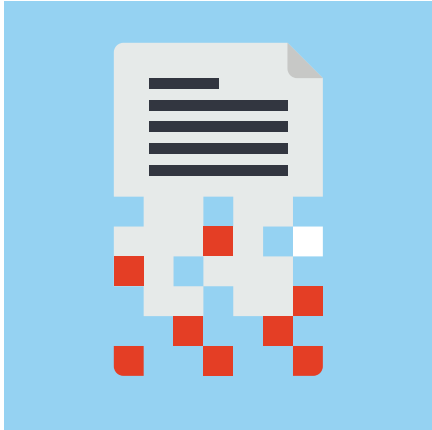
PHYSICAL SECURITY & USER AUTHENTICATION

- » Tamper-evident devices (wire seals, plastic pin seals, etc.) imprinted with identification numbers are used for securing the unit and alerting election officials of unauthorized access while the unit is in storage, transport, preparation and operation.
- » The printer and scanner, along with all data ports, internal memory, USB flash drives and storage compartments are secured behind lockable doors with unique locks and controlled keys. These physical locks and seals are a first line of defense, and minimize the effect of any unauthorized access.
- » The operating software provides security access controls to limit and detect access to critical system components, guarding against system integrity loss and availability. Access codes are required for system access during equipment preparation, testing and operation. These safeguards cannot be bypassed or deactivated during system installation or operation, maintaining the integrity of the election data and audit record.



SYSTEM APPLICATION SECURITY

- » The ExpressVote XL is a purpose-built voting device, designed, manufactured and programmed for its specific functions. Its system functions are only executable during election events, in the manner and order intended by election officials performing their duties. All administrative functions are limited to the touchscreen controls and data ports, and the device has no capability to write or allow change to the election program once installed. The system also performs a self-diagnostic test at startup, which alerts election officials of errors or changes to the system before any election data is introduced.



ENCRYPTION & DATA INTEGRITY VALIDATION

- » The ExpressVote XL will only accept certified and approved USB flash drives that contain encrypted data sealed with the correct, FIPS-compliant, signed data key. As such, once an election official installs election programming, it is not possible for a separate device to interface with the ExpressVote XL in order to overwrite or change the election definition or system firmware. The ExpressVote XL also generates a signed data key, ensuring that should unauthorized access of a unit occur, no other units can be affected through data transfer. All data generated during the polls is encrypted and digitally signed. Additional hash validations ensure data integrity remains intact.
- » The ExpressVote XL is a paper-based system which maintains verifiable paper vote records for every voter, containing both human-readable selections and corresponding machine-readable barcode. The machine-readable barcode on a voter's paper vote record can be read by any ExpressVote XL unit before tabulation to verify the voter's intent was captured. When the ExpressVote XL is used as a tabulator, the system maintains paper vote records and digital images of each ballot cast. When election results ballot data is collected, the data is fully encrypted and digitally signed to ensure results are secure from the time they are bundled by the ExpressVote XL until they are processed by the election results reporting program. Each vote record is then tabulated by the ExpressVote XL, which scans the barcode either during the current vote session or after being re-inserted in the unit for tabulation, and securely stored according to each jurisdiction's election laws for recount and auditing purposes.



VERIFICATION

- » The ExpressVote XL generates a detailed audit log of all actions and events that have occurred on the unit, which can be printed at any time. Every action and event, including access attempts, access of system functions and errors, is logged and timestamped. Audit logs may be saved to a USB flash drive.