

# ExpressVote<sup>®</sup> as a Marker



## PRODUCT INFORMATION

The ExpressVote Universal Voting System uses touch-screen technology that produces a paper-based record for subsequent tabulation. As a marker, the ExpressVote handles the entire marking process, eliminating marginal marks and the need for interpretation of the voter's mark.



Digital media assets, including pictures, videos, security documents and our marketing one-sheets are available for download at:  
[essvote.com/download-media-assets-expressvote](http://essvote.com/download-media-assets-expressvote)

## KEY FEATURES & BENEFITS



### INNOVATIVE DESIGN FOR ACCESSIBILITY

The ExpressVote can serve every eligible voter, including those with disabilities. As a fully compliant Americans with Disabilities Act (ADA) voting solution, the ExpressVote provides each voter independence. The unit easily accommodates ADA voting solutions such as headphones, sip-and-puff device, two-position rocker switch and audio-tactile keypad.



### EASE OF USE AND SETUP

The intuitive design offers easy-to-follow instructions for election officials, poll workers and voters. There is no complicated technology to manage or program. The ExpressVote is easy for poll workers to set up and close down in four simple steps. The unit's small size and light weight make it easy to transport and store.



### MULTILINGUAL CAPABILITY

Multiple languages can be stored on a single unit for use with both audio and visual voting sessions. Allowing voters to choose their selections using their language of choice maintains confidence and enhances the voting experience.



### INTERACTIVE TOUCH SCREEN

Voters touch a screen to mark their selections and review a summary of their selections. If the voter wants to change his or her vote, they can do so at that time. The ExpressVote notifies voters of overvotes and undervote with on-screen prompts and feedback.



### VERIFIABLE PAPER RECORD

After all selections are verified on the touch screen, the unit produces a paper vote summary card that provides voters another opportunity to review their selections and verify that their vote was recorded accurately before submitting for tabulation. The vote summary card also serves as an audit trail for election officials.

# ExpressVote<sup>®</sup> as a Marker

## Security Facts



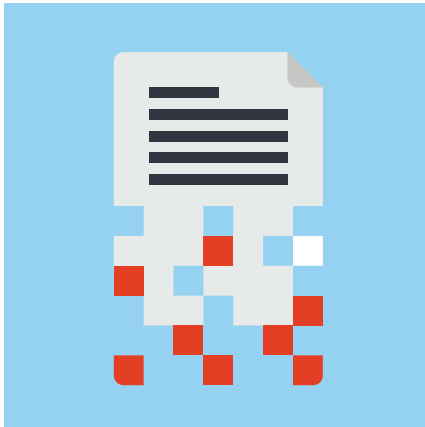
### PHYSICAL SECURITY & USER AUTHENTICATION

- » Tamper-evident devices (wire seals, plastic pin seals, etc.) imprinted with identification numbers are used for securing the unit and alerting election officials of unauthorized access while the unit is in storage, transport, preparation and operation.
- » The power button, critical hardware components, data ports and USB flash drives are protected behind lockable doors that can be sealed to alert election officials of unauthorized access.
- » For additional security, the ExpressVote unit can be locked and sealed within the rolling kiosk.
- » These physical locks and seals are a first line of defense, and minimize the effect of any unauthorized access.



### SYSTEM APPLICATION SECURITY

- » The operating software provides security access controls to limit and detect access to critical system components, guarding against system integrity loss and availability. Access codes are required for system access during equipment preparation, testing and operation. These safeguards cannot be bypassed or deactivated during system installation or operation, maintaining the integrity of the election data and audit record.
- » **The ExpressVote is a purpose-built voting device, designed, manufactured and programmed for its specific functions.**
- » Its system functions are only executable during election events, in the manner and order intended by election officials performing their duties. The system also performs a self-diagnostic test at startup, which alerts election officials of errors or changes to the system before any election data is introduced.
- » All administrative functions are limited to the touchscreen controls and data ports, and the device has no capability to write or allow change to the election program once installed.



## ENCRYPTION & DATA INTEGRITY VALIDATION

- » The ExpressVote will only accept certified and approved USB flash drives that contain encrypted data sealed with the correct, FIPS-compliant, signed data key. As such, once an election official installs election programming, it is not possible for a separate device to interface with the ExpressVote in order to overwrite or change the election definition or system firmware.
- » All data generated during the polls is encrypted and digitally signed. Additional hash validations ensure data integrity remains intact. The ExpressVote also generates a signed data key, ensuring that should unauthorized access of a unit occur, no other units can be affected through data transfer.
- » The ExpressVote is a paper-based system which maintains verifiable paper vote records for every voter, containing both human-readable selections and corresponding machine-readable barcode. The machine-readable barcode on a voter's paper vote record can be read by any ExpressVote unit before tabulation to verify the voter's intent was captured. Each vote record is then tabulated by an ES&S tabulator and securely stored according to each jurisdiction's election laws for recount and auditing purposes. As a marking device, no tabulation data is stored in the ExpressVote.



## VERIFICATION

- » **The ExpressVote generates a detailed audit log of all actions and events that have occurred on the unit, which can be printed at any time.**
- » Every action and event, including access attempts, access of system functions and errors, is logged and timestamped.
- » Audit logs may be saved to a USB flash drive.