



# DS200<sup>®</sup>

## Precinct Scanner & Tabulator



### Protective Cover

Cover has heavy-duty rubber seal to shelter DS200 from elements during transport.

### Easy to Set Up

Lid-up, power-on approach allows poll workers to easily open polls.

### Touch-Screen Display

Provides voters with instructions and immediate feedback. Tension bearings hold screen in place for custom positioning.

### Ballot/Card Slot

Voters cast both ballots and vote summary cards here; accommodates up to 19-inch ballots.

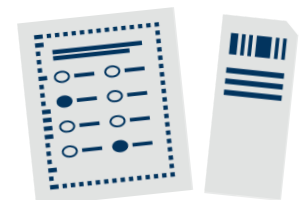
### Auxiliary Ballot Compartment

### Main Ballot Compartment

Easy, hassle-free storage of up to 3,500 ballots.

## Enhanced Voting Experience

The DS200 is a precinct-based scanner and vote tabulator equipped with the latest in ES&S' patented technology. Fully certified and compliant with EAC guidelines, the DS200 enhances the voting experience for voters and election officials alike. Our patented Intelligent Mark Recognition (IMR<sup>®</sup>) and patented Positive Target Recognition & Alignment Compensation (PTRAC<sup>®</sup>) technologies ensure even the most poorly marked ballots are read accurately and consistently — protecting voter intent. All of this is designed to make everyone's job easier.



**11** 14-inch flat ballots processed per minute

## ACCURATE



The DS200 combines the ES&S-patented IMR® and PTRAC® systems to accurately track and pinpoint target locations. This technology accommodates ballots inserted at angles or with erroneous marks to uphold voter intent. This precision improves the reliability of elections.

## RELIABLE



Having both battery backup and thermal paper means you never have to worry about power outages or printer ink. The DS200 includes redundant data storage.

## SECURE



Like all ES&S tabulation equipment, the DS200 includes physical security features such as locking panels and security seals to secure sensitive components and election files, and a key-locked case for transport and shipping. The DS200 operating system controls, limits and detects unauthorized access to all critical data. The system also includes safeguards, such as data encryption and digital signatures, that help protect sensitive data and verify authenticity, including certification of all firmware.

## COMPATIBLE



Works in conjunction with:

- ExpressVote® Universal Voting System
- DS450® High-Throughput Scanner & Tabulator
- DS850® High-Speed Scanner & Tabulator
- DS950® High-Speed Scanner & Tabulator
- Electionware® Election Management Software
- AutoMARK® Ballot Marking Device
- Election Reporting Manager®



**The election yesterday went so well,  
I hugged my DS200 at the end of the night."**

ANNETTE STASHEK, VILLAGE CLERK FOR THE VILLAGE OF WHITING, WI