



# Electionware®

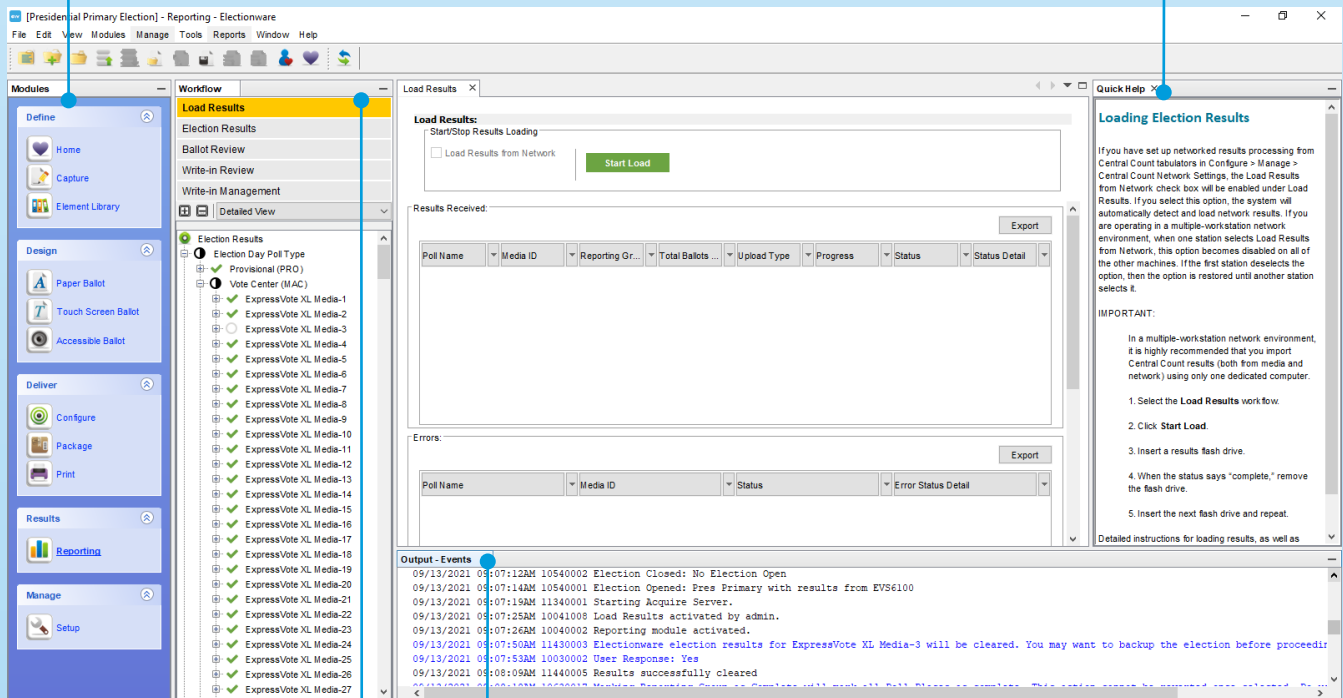
## Election Management Software

### Build Elections in Less Time

Easy workflow enables end-to-end election management, from data capture, ballot layout and configuring equipment to loading and reporting results.

### Find Answers Easily

Interactive, comprehensive Quick Help, available in all areas of Electionware, empowers election administrators to easily find answers to common questions.



### Ensure Consistent Data

Intuitive Navigator toolbar helps users organize their work and see data quickly.

### Create Error-free Elections

Flexible and powerful election management software guides users through creating the election, ensuring that all election data, security codes and machine settings are added correctly to the election definition.

## Easy to Master

Jurisdictions of all sizes can manage their elections through Electionware's easy-to-understand, user-friendly interface. You'll get the knack of the software in no time because the design is based on actual election workflow, making it easy to learn and navigate. The software accommodates early and overseas voting, ADA compliance, ballot adjudication and election night reporting.

## WHAT'S IN IT FOR ELECTION OFFICIALS?

- **Power.** Manages thousands of ballot styles and precincts; incorporates many languages; manages and deploys multiple levels of security.
- **Intelligence.** Real-time election data queries and reports; workflow management and error alerts; enforced data accuracy; user customization; tracking of election media; helpful status indicators for incoming results.
- **Productivity.** Fast data import; reuse of election and ballot layout templates; simple translation and audio file management; multiple simultaneous users; ballot image filtering, viewing and printing.

### Work Simultaneously

Electionware's multi-user functionality allows multiple authorized election personnel on a closed-network system to prepare precinct flash drives simultaneously or load results while running reports, even on different elections.

### Ensure Electionwide Uniformity and Compliance

Electionware uses one database for multiple equipment types, manages nearly 15,000 ballot styles and precincts, supports numerous languages and manages and deploys multiple levels of security configurable to jurisdiction requirements.

## 5 COMPREHENSIVE ELECTION MANAGEMENT SOFTWARE GROUPS

Electionware gives election administrators the software tools needed to:

- **Create elections**
- **Design ballots**
- **Configure digital tabulation and accessible equipment**
- **Manage election results data**
- **Generate custom results reports**

These tasks are coordinated through Electionware's five software groups, each representing a stage of the election process.

Each group includes modules that handle specific functions for setting up an election and processing results — all of which can be configured.

<b>DEFINE</b>	<ul style="list-style-type: none"><li>• Capture contests, candidate and proposition information</li><li>• Import data (precincts, candidates)</li></ul>
<b>DESIGN</b>	<ul style="list-style-type: none"><li>• Design paper ballots</li><li>• Lay out touch-screen ballots to display single or multiple contests per screen</li><li>• Configure accessibility settings</li></ul>
<b>DELIVER</b>	<ul style="list-style-type: none"><li>• Set equipment access and configurations</li><li>• Package data onto flash drives for use with equipment and ES&amp;S pollbooks</li><li>• Print ballots on demand with ES&amp;S BOD</li></ul>
<b>RESULTS</b>	<ul style="list-style-type: none"><li>• Load election results</li><li>• Adjudicate ballots and organize write-ins</li><li>• Filter information and generate reports</li></ul>
<b>MANAGE</b>	<ul style="list-style-type: none"><li>• Control user access</li><li>• Set security code complexity</li></ul>