



# Electionware®

## Election Management Software

### User Friendly

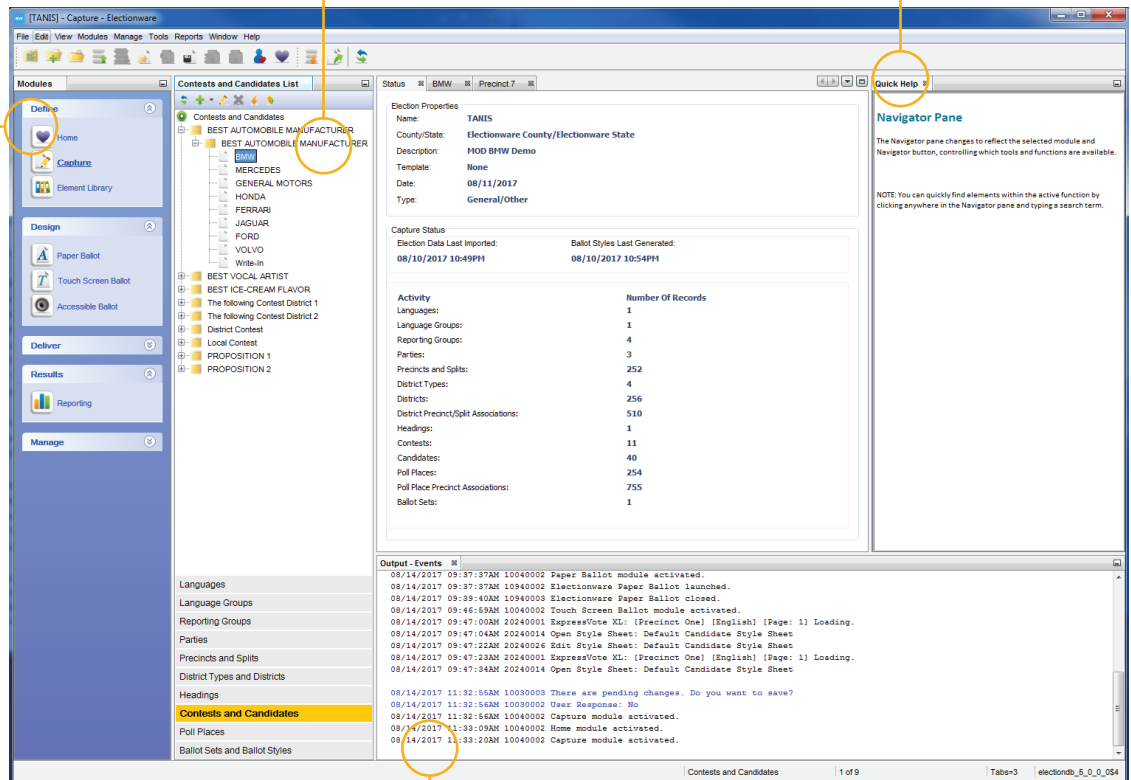
Navigator helps users access exactly what is needed in the current module.

### Quick Help

Context-sensitive Quick Help is available in all areas of Electionware.

### Easy End-to-End Workflow

Enables end-to-end election management, from data capture, ballot layout, and configuring equipment to loading and reporting results.



### Feedback

Flexible, yet powerful election management software guides users through the creation of the election, ensuring that all election data, security codes, and machine settings are added correctly to the election definition.

## ELECTION INTELLIGENCE

- Timely election data inquiries and reports
- Workflow management and error alerts
- Enforced data accuracy
- User customization
- Tracking of election media
- Live status indicators for incoming results

## PRODUCTIVITY

- Fast data import
- Reusable election and ballot layout templates
- Simple translation and audio file management
- Multiple simultaneous users
- Ballot image filtering, viewing and printing

# Electionware Key Features

Electionware is designed to accommodate the latest election trends, including early and overseas voting, ADA compliance, ballot adjudication, and Election Night reporting. Use Electionware to create an election information database, format ballots, program voting and ballot scanning equipment, consolidate results, review ballot images, and report results. This agile election management software is the result of our nearly 40 years of election product research and development.

## SIMULTANEOUS MULTIUSER ACCESS



Electionware's multi-user functionality allows multiple authorized election personnel on a closed-network system to prepare precinct flash drives simultaneously, or load results while simultaneously running reports. Additionally, the multi-user functionality in Electionware allows multiple teams of election officials to work simultaneously on different elections.

## DATA SECURITY



Electionware incorporates the latest in election security, including built-in audit controls, encrypted election data, and access level user credentials designed to keep election data safe and secure. Electionware is fully compliant with EAC guidelines for usability, accessibility and security requirements. The Equipment Security feature creates security codes that control access to voting equipment. All election media USB flash drives contain encryption specific to the current election and equipment type.

## ROBUST



Electionware manages nearly 10,000 ballot styles and precincts; supports myriad languages; manages and deploys multiple levels of security. One database for multiple equipment types provides election-wide uniformity and compliance, as well as less room for human error.